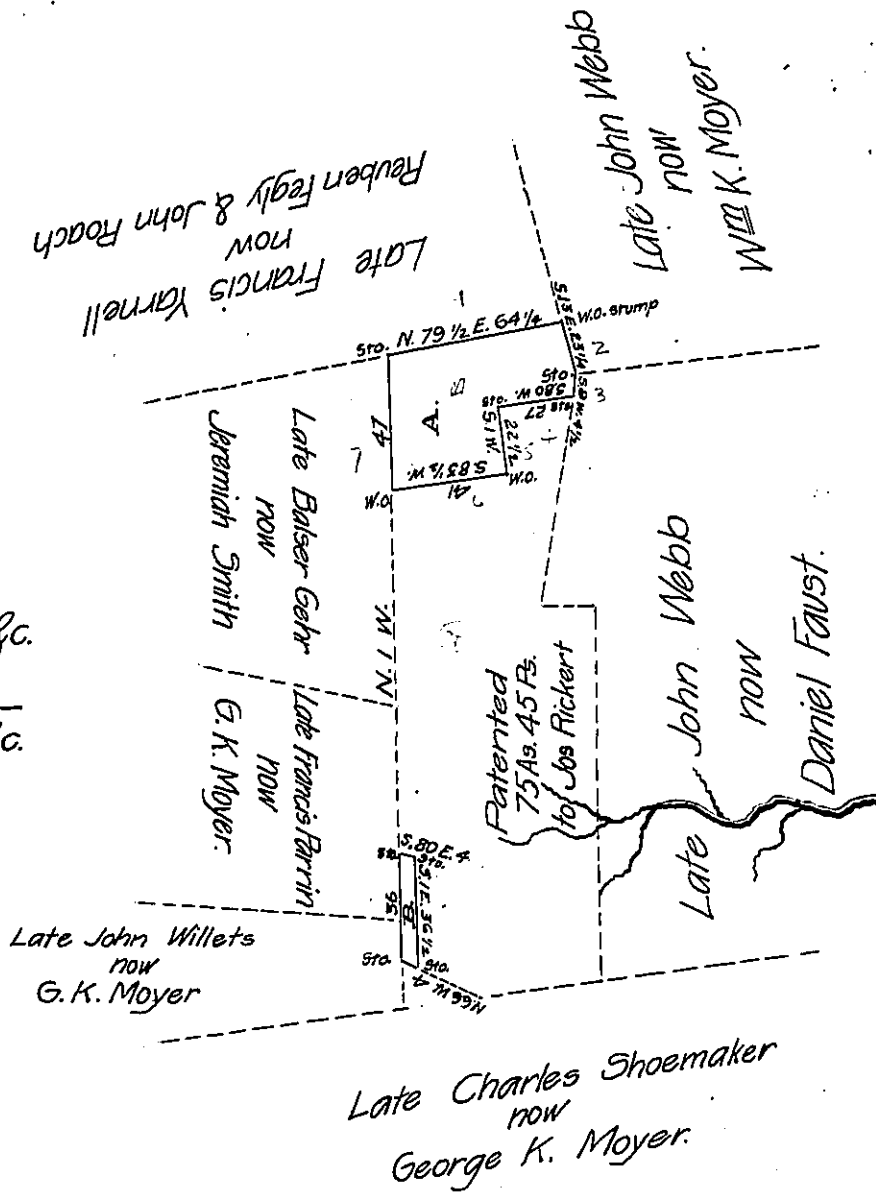


A contains 16As. 8 1/2 Ps. & c.  
 B " 129 1/2  
 16As. 138 Ps. & c.



Draft of two tracts of Land Situate in West Brunswick Township in the County of Schuylkill Containing together 16As. and 138 Perches and the allowance of six per cent for Roads &c. Surveyed for Jeremiah Smith, W<sup>m</sup> K. Moyer, & George K. Moyer the 8<sup>d</sup> day of Jan'y 1872. It being a part of a larger tract of land of 127As. 42ps. and the allowance. Originally surveyed in pursuance of a Warrant granted to John Webb dated 30<sup>d</sup> August 1753.

D.L. Boyer,

To J. M. Campbell, Esq.,  
 Surveyor General of Penna }

County Surveyor.

The tract marked A contains 16As. 8 1/2 Ps. & c. and the tract marked B contains 129 1/2 Ps. & c.

D.L.B.

G.S.

IN TESTIMONY that the above is a copy of the original remaining on file in the Department of Internal Affairs of Pennsylvania, made conformably to an Act of Assembly approved the 16th day of February, 1833, I have hereunto set my Hand and caused the Seal of said Department to be affixed at Harrisburg, this 20<sup>th</sup> day of August 1907.

*Henry Howe*  
 Secretary of Internal Affairs.